

Ultra20TM

PlantationShutter

Privacy & Light Control

made easy



**PREMIUM QUALITY
COMPOSITE POLYMER**



ENERGY EFFICIENT



MOISTURE RESISTANCE



HYPOALLERGENIC



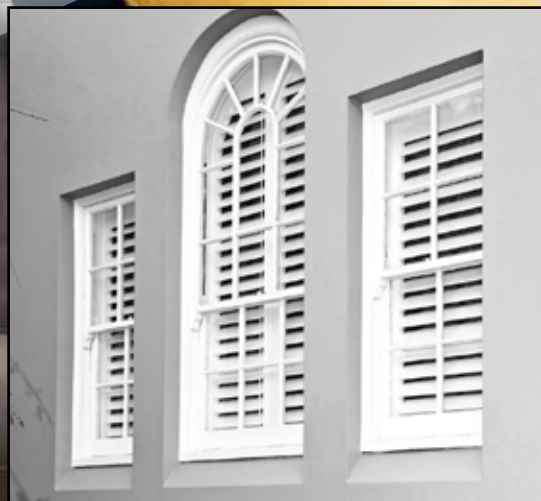
FIRE SAFE



LOW MAINTENANCE



20 YEAR*
WARRANTY



 **20 YEAR***
WARRANTY

Comprehensive Warranty
on Construction

• Ultra20 Shutters take advantage of their unique Composite Polymer to blend strength, stability and precision into a beautiful long lasting investment for your home. The proprietary synthetic material has the character and elegance of real timber with better moisture resistance and energy efficiency.

• Ultra20 is completely flexible to suit any situation including living areas, bedrooms, wet areas, or shaped openings.

MOUNTING SYSTEM OPTIONS



HINGED



BAY



CORNER



FIXED



SLIDING



BI FOLDS

SHAPED OPTIONS



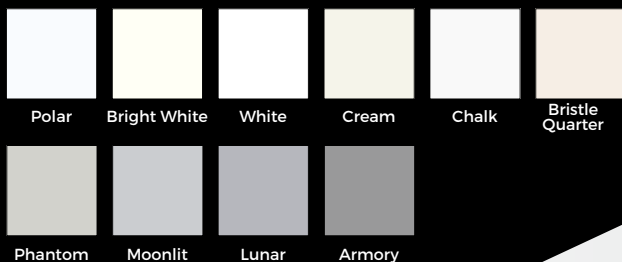
SPECIALTY SHAPES

PLANTATION SHUTTERS

- Unique Composite polymer engineered to the latest technologies.
- 20 year comprehensive warranty on construction*.
- Uses Valspar brand paint (UV tested by QAI laboratories).
- Energy Efficient – insulates better than Timber. (ASTM Thermo Performance Tested).
- Will not absorb moisture – Suitable for wet areas.
- Hypoallergenic, Low Maintenance and easy to clean.
- Fire Retardant (NPFA 701 Certified)
- Wide panel widths over 900mm.
- Controls light, views and privacy.
- Customisable – Large colour range and frame options - Can do shapes!



COLOUR RANGE



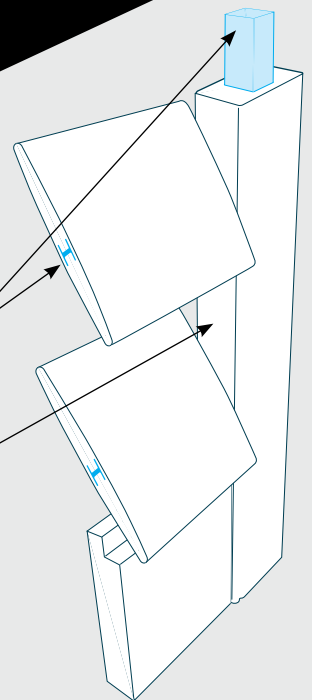
Aluminium inserts
in all stiles and louvres

Solid – Coextrusion stile
(stronger than 2 part alternatives)

**COMPOSITE SHUTTERS
CONSTRUCTION**
DESIGNED FOR FAMILIES



20 YEAR*
WARRANTY



*Terms & Conditions Apply



Bi BLIND INSPIRATION